

**INSTRUMENT  
APPROACH  
CHART - ICAO**

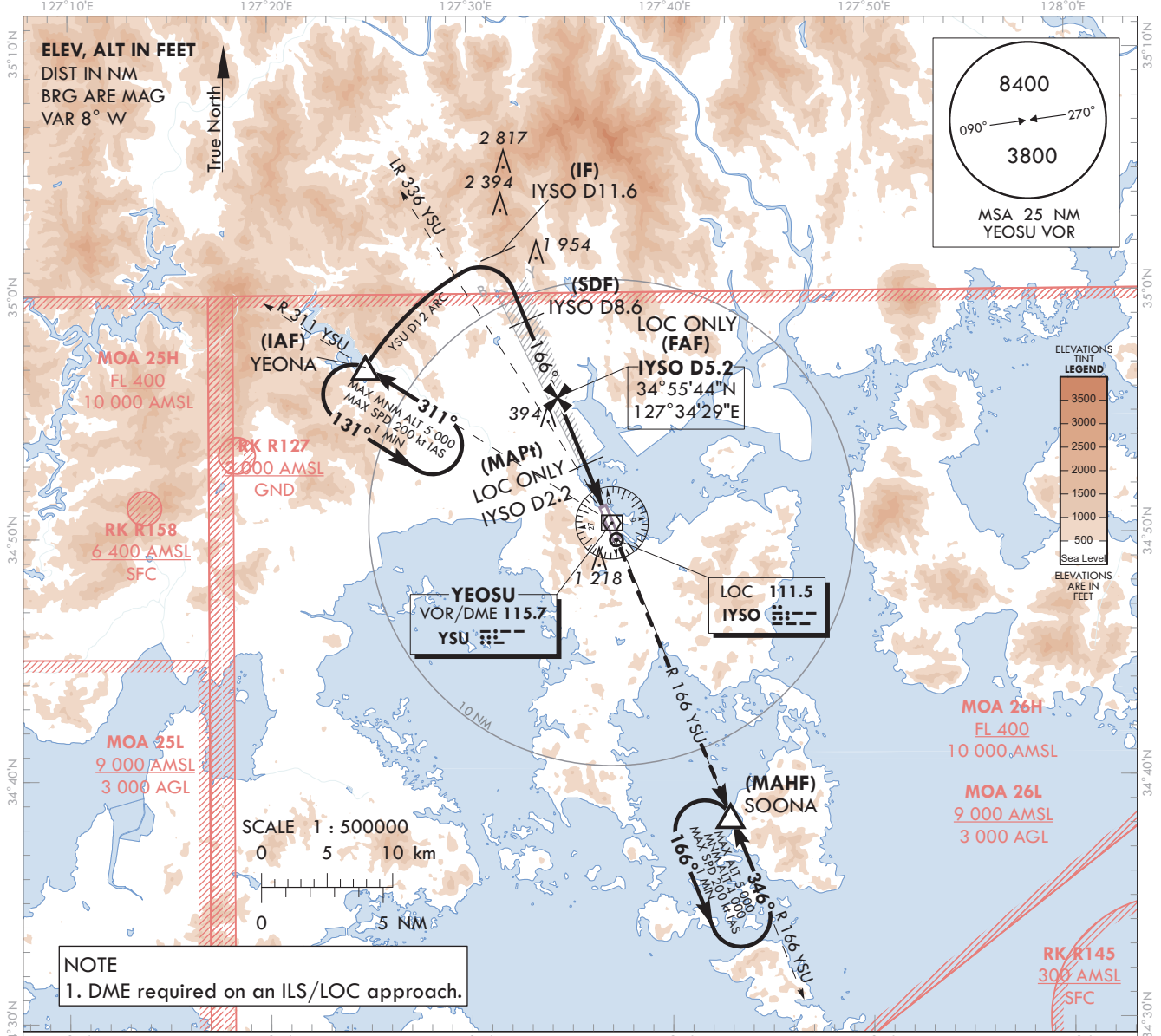
**AERODROME ELEV 53 ft**  
HEIGHTS RELATED TO  
THR RWY 17 - ELEV 28 ft

SACHEON APP	135.4
YEOSU TWR	122.5
	240.9

**YEOSU/Yeosu (RKJY)**

Note : Approach Under ICAO Flight Procedures.

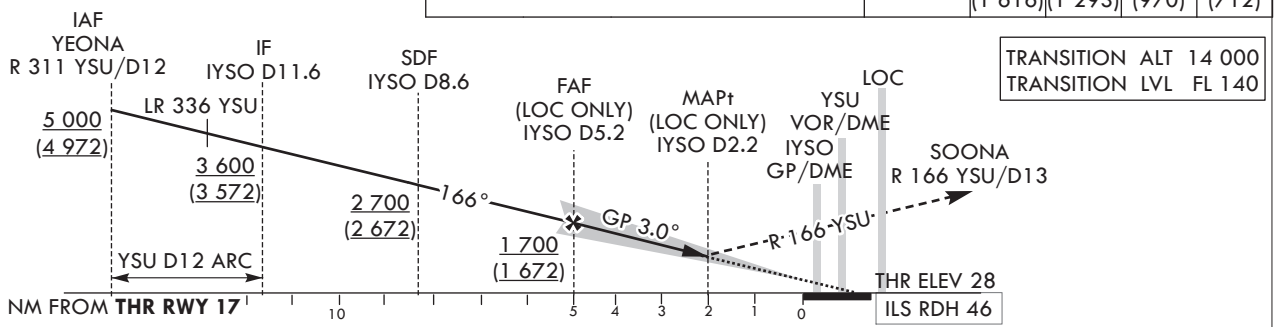
**ILS Y or LOC Y RWY 17**



**NOTE**  
1. DME required on an ILS/LOC approach.

**MISSED APPROACH**  
Climb to R 166 YSU to SOONA  
and Hold at 4 000 ft

RECOMMENDED PROFILE(LOC ONLY)	DME IYSO	5	4	3	2.2
Final Approach Gradient 5.31%, 323 ft/NM	ALT(HGT)	1 644 (1 616)	1 321 (1 293)	998 (970)	740 (712)



CATEGORY	DA(DH)/MDA(MDH)	A				B				C				D					
		351 (323)				1 000 m 1 700 m				RVR 550 m, VIS 800 m				Rate of descent					
STA	CAT-1 (CG 2.5%)	FULL	228	910	740	351	1 000 m	1 700 m	1 200 m	3 300 m	4 000 m	3 200 m	3 900 m	V/V fpm	318	478	637	796	955
	CAT-1 (CG 5.0%)	FULL	228	910	740	351	1 000 m	1 700 m	1 200 m	3 300 m	4 000 m	3 200 m	3 900 m						
		ALS INOP	(200)	(882)	(712)	(323)	1 000 m	1 700 m	1 200 m	3 300 m	4 000 m	3 200 m	3 900 m						
		ALS INOP	(200)	(882)	(712)	(323)	1 000 m	1 700 m	1 200 m	3 300 m	4 000 m	3 200 m	3 900 m						
		FULL	910	740	351	1 000 m	1 700 m	1 200 m	3 300 m	4 000 m	3 200 m	3 900 m							
		ALS INOP	(882)	(712)	(323)	1 000 m	1 700 m	1 200 m	3 300 m	4 000 m	3 200 m	3 900 m							

Change : Improved clarity such as terrain.

YEOSU/Yeosu(RKJY)  
ILS Y or LOC Y RWY 17

AERONAUTICAL DATA TABULATION

ILS Y / LOC Y Approach to RWY 17 from YEONA			
Fix/point		Coordinates	
YEONA(IAF)	R 311 YSU /12.00 NM YSU	34°57'03.8"N	127°24'52.1"E
D11.6 IYSO(IF)	BRG 165.87°/11.60 NM IYSO	35°01'41.4"N	127°31'33.6"E
D8.6 IYSO(SDF)	BRG 165.87°/8.60 NM IYSO	34°58'54.5"N	127°32'55.7"E
D5.2 IYSO(FAF LOC ONLY)	BRG 165.87°/5.17 NM IYSO	34°55'44.1"N	127°34'29.3"E
D2.2 IYSO(MAPt LOC ONLY)	BRG 165.87°/2.20 NM IYSO	34°52'58.5"N	127°35'50.6"E
THR RWY 17	Final approach descent angle 3.04° (LOC ONLY)	34°51'03.73"N	127°36'46.77"E
IYSO DME		34°50'57.3"N	127°36'54.6"E
YSU VOR/DME		34°50'34.3"N	127°37'08.7"E
IYSO LOC		34°49'52.0"N	127°37'21.9"E
SOONA	BRG 166.34°/13.00 NM YSU	34°38'27.5"N	127°42'56.0"E

**INSTRUMENT  
APPROACH  
CHART - ICAO**

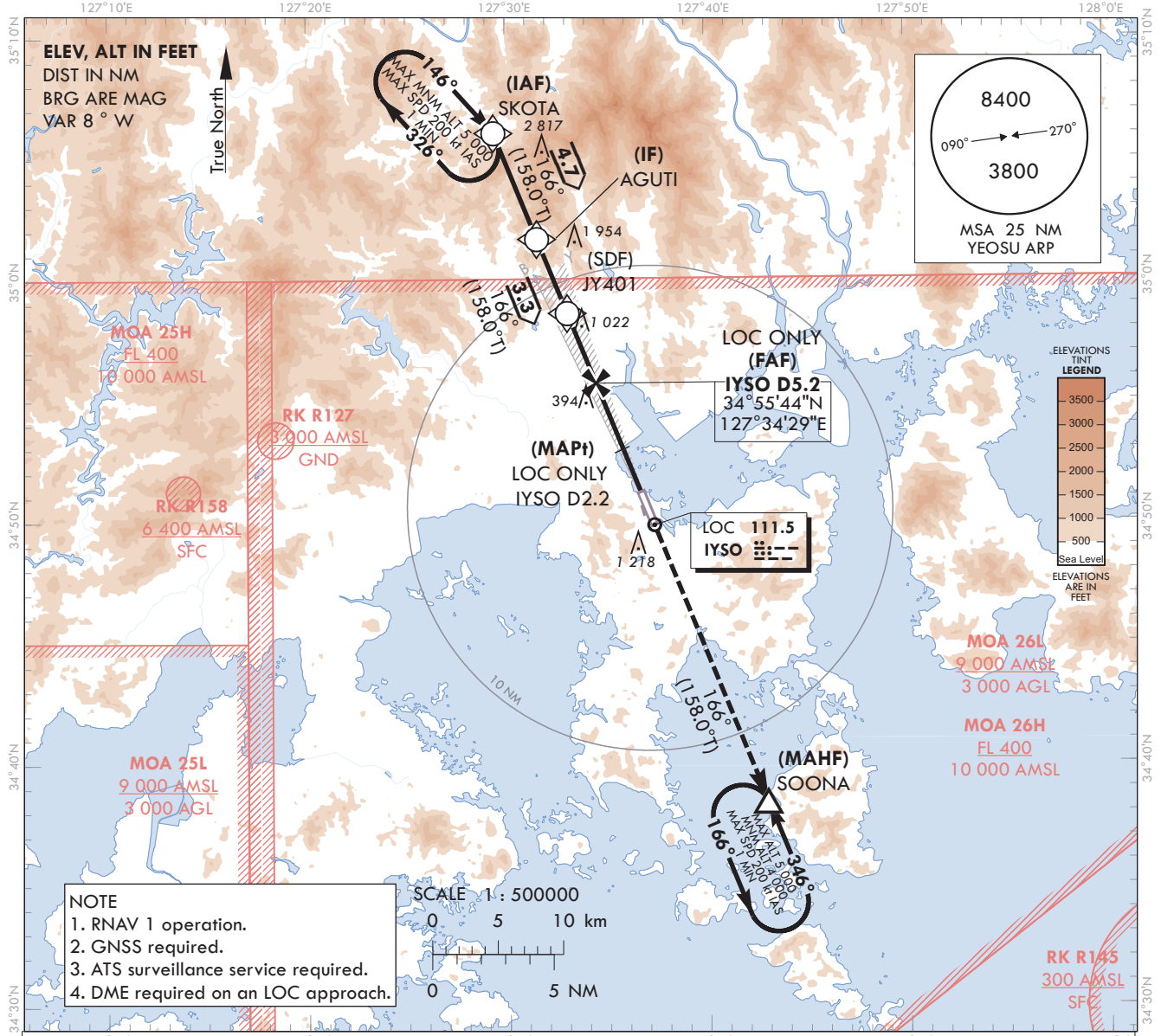
**AERODROME ELEV 53 ft**  
HEIGHTS RELATED TO  
THR RWY 17 - ELEV 28 ft

SACHEON APP	135.4
YEOSU TWR	122.5
	240.9

**YEOSU/Yeosu (RKJY)**

**ILS Z or LOC Z RWY 17**

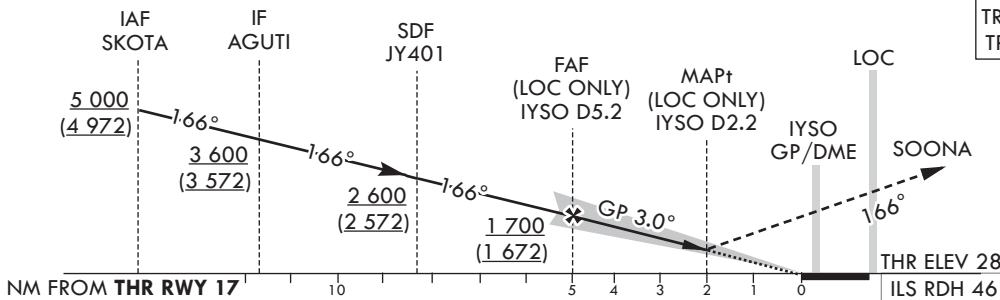
Note : Approach under ICAO Flight Procedures.



**MISSED APPROACH**  
Climb to 4 000 ft on track of 166° to SOONA.  
Hold as published.

RECOMMENDED PROFILE(LOC ONLY)	DME IYSO	5	4	3	2.2
Final Approach Gradient 5.31%, 323 ft/NM	ALT(HGT)	1 644 (1 616)	1 321 (1 293)	998 (970)	740 (712)

TRANSITION ALT 14 000  
TRANSITION LVL FL 140



CATEGORY	DA(DH)/MDA(MDH)	A	B	C	D	Knots						
						60	90	120	150	180		
STA	CAT-1 FULL	351	1 000 m				Rate of descent V/V fpm	318	478	637	796	955
	(CG 2.5%) ALS INOP	(323)	1 700 m									
	CAT-1 FULL	228	RVR 550 m, VIS 800 m									
	(CG 5.0%) ALS INOP	(200)	1 200 m									
	LOC FULL	910	3 300 m									
	(CG 2.5%) ALS INOP	(882)	4 000 m									
LOC FULL	740	3 200 m				*Timing Not authorized for defining MAPt. *Circling Not authorized.						
(CG 5.0%) ALS INOP	(712)	3 900 m										

Change : Improved clarity such as terrain.

YEOSU/Yeosu(RKJY)  
ILS Z or LOC Z RWY 17

AERONAUTICAL DATA TABULATION

ILS Z / LOC Z Approach to RWY 17 from SKOTA			
Fix/point		Coordinates	
SKOTA(IAF)		35°06'04.9"N	127°29'24.2"E
AGUTI(IF)		35°01'41.4"N	127°31'33.6"E
JY401(SDF)		34°58'37.8"N	127°33'04.0"E
D5.2 IYSO(FAF LOC ONLY)	BRG 165.87°/5.17 NM IYSO	34°55'44.1"N	127°34'29.3"E
D2.2 IYSO(MAPt LOC ONLY)	BRG 165.87°/2.20 NM IYSO	34°52'58.5"N	127°35'50.6"E
THR RWY 17	Final approach descent angle 3.04° (LOC ONLY)	34°51'03.73"N	127°36'46.77"E
IYSO DME		34°50'57.3"N	127°36'54.6"E
IYSO LOC		34°49'52.0"N	127°37'21.9"E
SOONA		34°38'27.5"N	127°42'56.0"E

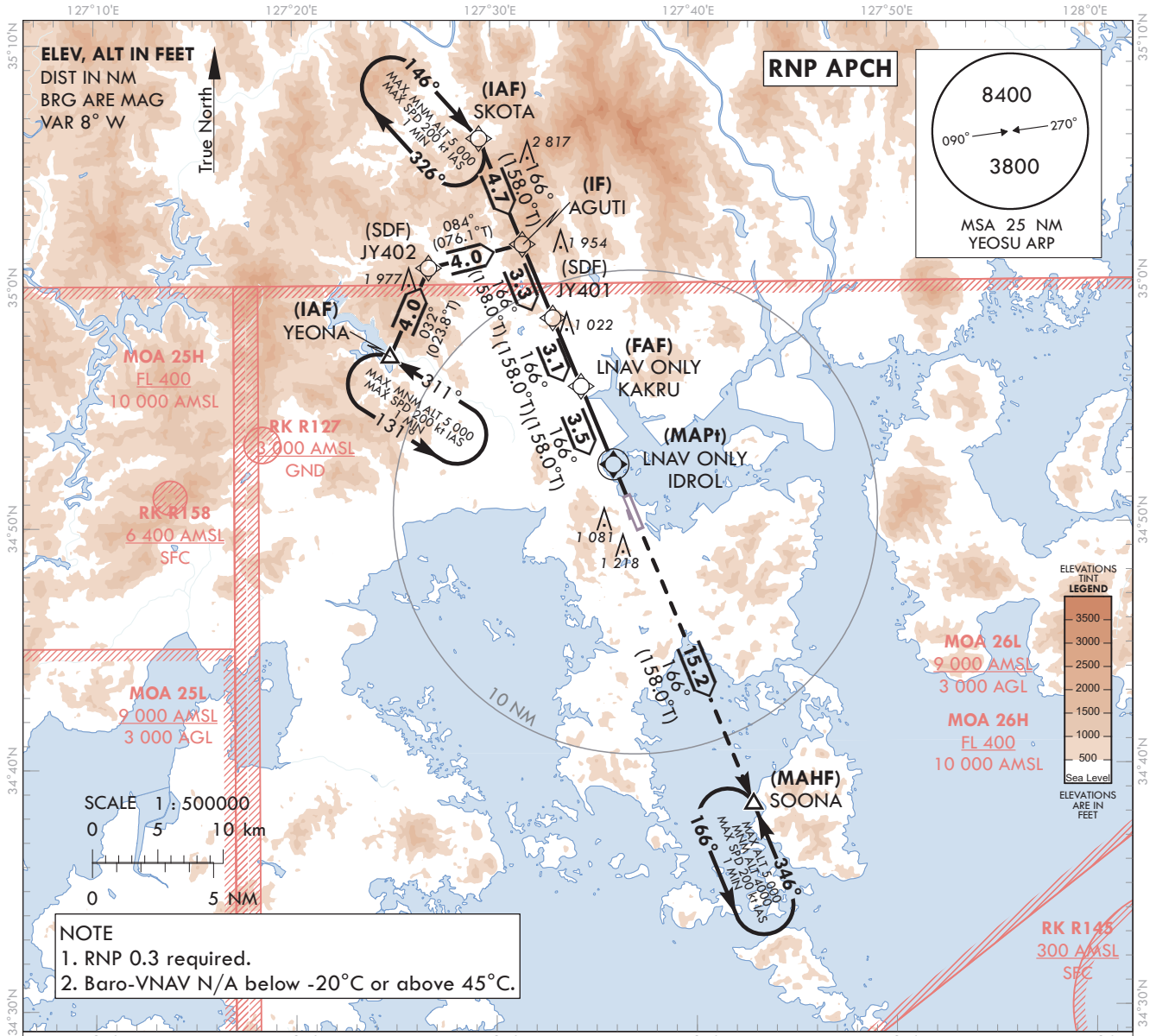
**INSTRUMENT  
APPROACH  
CHART - ICAO**

**AERODROME ELEV 53 ft**  
HEIGHTS RELATED TO  
THR RWY 17 - ELEV 28 ft

SACHEON	APP	135.4
YEOSU	TWR	122.5
		240.9

**YEOSU/Yeosu (RKJY)**  
RNP RWY 17

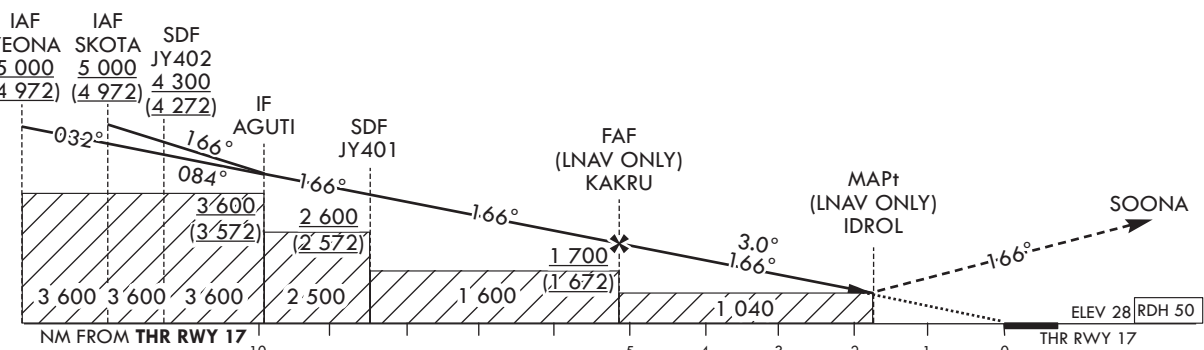
Note : Approach Under ICAO Flight Procedures.



TRANSITION ALT 14 000  
TRANSITION LVL FL 140

**MISSED APPROACH**

Climb to 4 000 ft on track of 166° to SOONA.  
Hold as published.



CATEGORY		MDA(H)/DA(H)	A	B	C	D	Knots						
STA	LNAV/VNAV	FULL	910	3 300 m			Rate of descent	V/V fpm	318	478	637	796	955
		ALS INOP	(882)	4 000 m									
	LNAV	FULL	1 040	4 100 m			* Timing Not authorized for defining MAPt. * Circling Not authorized.						
		ALS INOP	(1 012)	4 900 m									

AERONAUTICAL DATA TABULATION

Instrument Approach Procedure Coding Tables

RNP RWY 17 - via SKOTA to AGUTI(IF)

Serial Number	Path Descriptor	Waypoint Identifier	Fly-over	Course/Track °M(°T)	Distance (NM)	Turn direction	Altitude (ft)	Speed (kt)	Coordinates	VPA/RDH	Navigation specification	Remarks
001	IF	SKOTA	-	-	-	-	+5 000	-	35°06'04.9"N 127°29'24.2"E	-	RNP APCH	IAF
002	TF	AGUTI	-	166(158.0)	4.7	-	+3 600	-	35°01'41.4"N 127°31'33.6"E	-	RNP APCH	IF

RNP RWY 17 - via YEONA to AGUTI(IF)

Serial Number	Path Descriptor	Waypoint Identifier	Fly-over	Course/Track °M(°T)	Distance (NM)	Turn direction	Altitude (ft)	Speed (kt)	Coordinates	VPA/RDH	Navigation specification	Remarks
001	IF	YEONA	-	-	-	-	+5 000	-	34°57'03.8"N 127°24'52.1"E	-	RNP APCH	IAF
002	TF	JY402	-	032(023.8)	4.0	-	+4 300	-	35°00'43.7"N 127°26'50.0"E	-	RNP APCH	SDF
003	TF	AGUTI	-	084(076.1)	4.0	-	+3 600	-	35°01'41.4"N 127°31'33.6"E	-	RNP APCH	IF

RNP RWY 17 - via AGUTI(IF) to SOONA(MAHF)

Serial Number	Path Descriptor	Waypoint Identifier	Fly-over	Course/Track °M(°T)	Distance (NM)	Turn direction	Altitude (ft)	Speed (kt)	Coordinates	VPA/RDH	Navigation specification	Remarks
001	TF	AGUTI	-	-	-	-	+3 600	-	35°01'41.4"N 127°31'33.6"E	-	RNP APCH	IF
002	TF	JY401	-	166(158.0)	3.3	-	+2 600	-	34°58'37.8"N 127°33'04.0"E	-	RNP APCH	SDF
003	TF	KAKRU	-	166(158.0)	3.1	-	+1 700	-	34°55'47.5"N 127°34'27.6"E	-	RNP APCH	FAF
004	TF	IDROL	Y	166(158.0)	3.5	-	+1 040	-	34°52'32.9"N 127°36'03.1"E	-3.00/50	RNP APCH	MAPt
005	TF	SOONA	Y	166(158.0)	1.52	-	-	-	34°38'27.5"N 127°42'56.0"E	-	RNP APCH	-
006	HM	SOONA	Y	346(338.5)	-	L	-5 000 +4 000	-200	34°38'27.5"N 127°42'56.0"E	-	RNP APCH	1 MIN (Outbound timing)

HOLDING PROCEDURE

Holding Identification	Path Descriptor	Waypoint Identifier	Fly-over	Course/Track °M(°T)	Distance (NM)	Turn direction	Altitude (ft)	Speed (kt)	Coordinates	VPA/RDH	Navigation specification	Remarks
RNP RWY 17	HM	SKOTA	Y	146(138.0)	1	R	@5 000	-200	35°06'04.9"N 127°29'24.2"E	-	RNAV 1	-
	HM	YEONA	Y	311(302.7)	1	L	@5 000	-200	34°57'03.8"N 127°24'52.1"E	-	RNAV 1	-
	HM	SOONA	Y	346(338.5)	1	L	-5 000 +4 000	-200	34°38'27.5"N 127°42'56.0"E	-	RNAV 1	-

Change : Information of ALT restriction for SOONA.

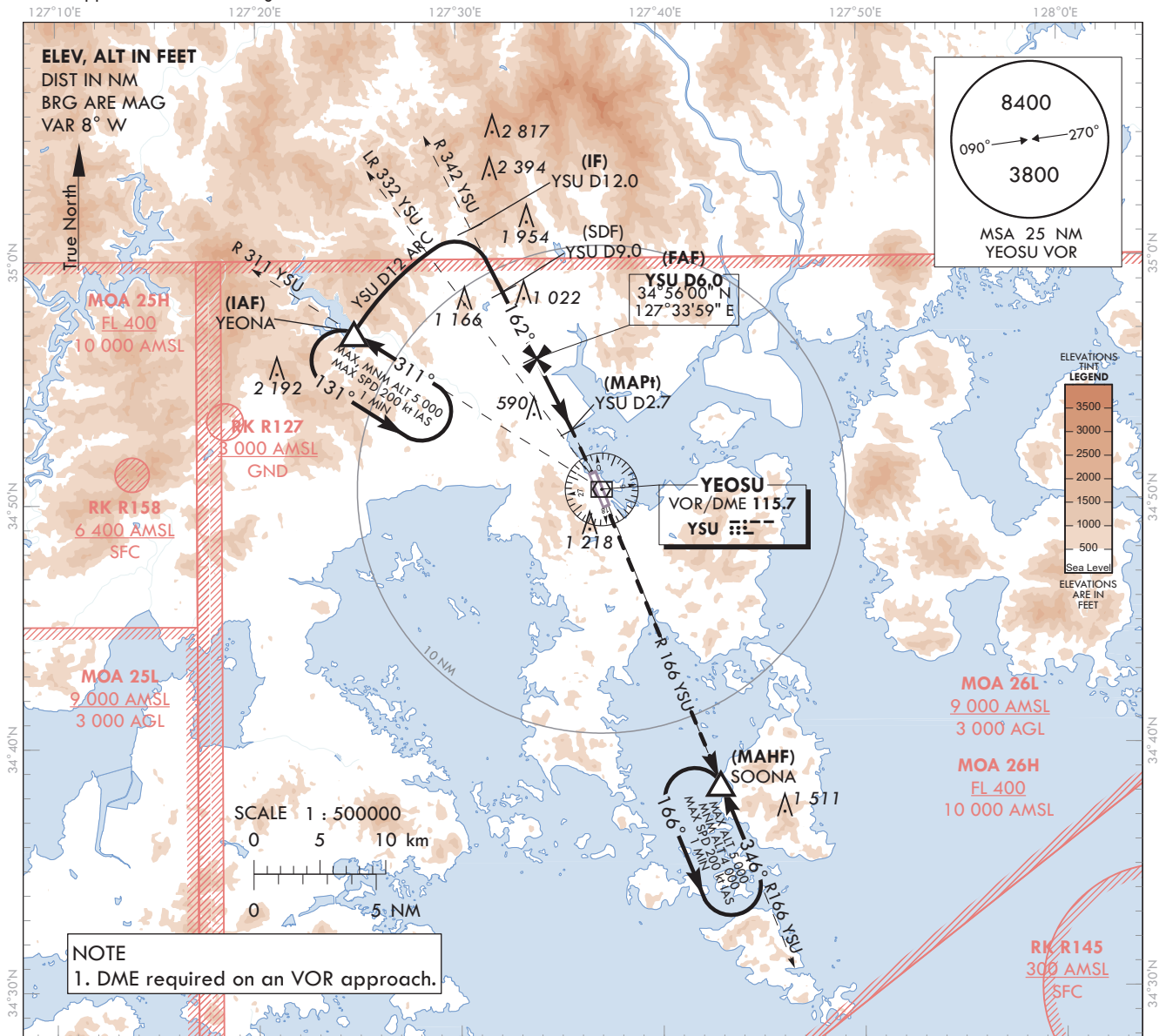
**INSTRUMENT  
APPROACH  
CHART - ICAO**

**AERODROME ELEV 53 ft**  
HEIGHTS RELATED TO  
THR RWY 17 - ELEV 28 ft

SACHEON APP	135.4
YEOSU TWR	122.5
	240.9

**YEOSU/Yeosu (RKJY)**  
**VOR RWY 17**

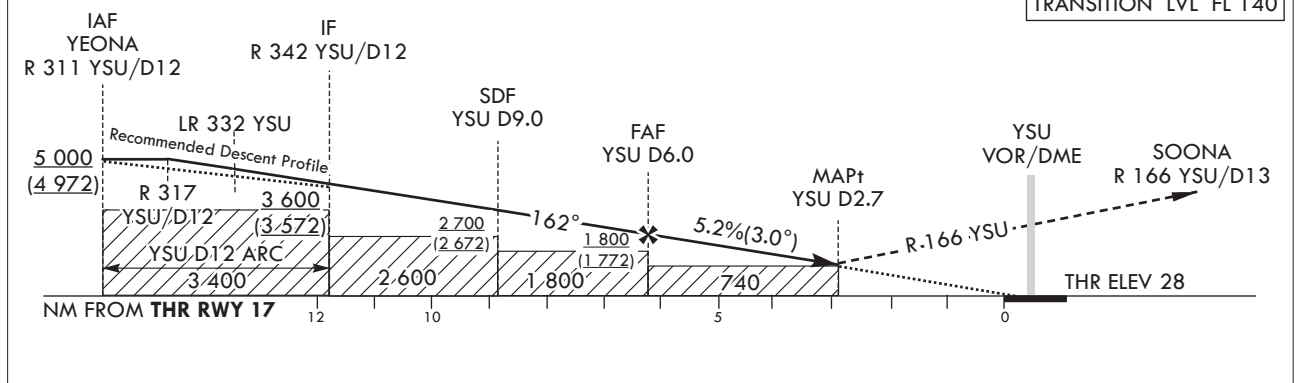
Note : Approach Under ICAO Flight Procedures.



**MISSED APPROACH**  
Climb on R 166 YSU to SOONA and Hold at 4 000 ft.

RECOMMENDED PROFILE	DME YSU	5	4	3	2.7
Final Approach Gradient 5.22%, 317 ft/NM	ALT(HGT)	1 483 (1 455)	1 166 (1 138)	849 (821)	760 (732)

TRANSITION ALT 14 000  
TRANSITION LVL FL 140



CATEGORY		MDA(MDH)	A	B	C	D	Knots					
STA (CG 2.5%)	FULL	900 (872)		3 300 m			Rate of descent V/V fpm	60	90	120	150	180
	ALS INOP			4 000 m				317	476	634	793	951
STA (CG 5.0%)	FULL	760 (732)		3 300 m			*Timing Not authorized for defining MAPt. *Circling Not authorized.					
	ALS INOP			4 000 m								

Change : Information of MDA(MDH)(740(712) → 760(732)) and MOCA(3 500 → 3 400).

YEOSU/Yeosu(RKJY)  
 VOR RWY 17

AERONAUTICAL DATA TABULATION

VOR Approach to RWY 17 from YEONA			
	Fix/point	Coordinates	
YEONA(IAF)	R 311 YSU /12.00 NM YSU	34°57'03.8"N	127°24'52.1"E
D12.0 YSU(IF)	BRG 162.28°/12.00 NM YSU	35°01'24.8"N	127°30'50.3"E
D9.0 YSU(SDF)	BRG 162.28°/9.00 NM YSU	34°58'42.2"N	127°32'24.9"E
D6.0 YSU(FAF)	BRG 162.28°/6.00 NM YSU	34°55'59.5"N	127°33'59.4"E
D2.7 YSU(MAPt)	BRG 162.28°/2.70 NM YSU	34°53'00.6"N	127°35'43.3"E
THR RWY 17	Final approach descent angle 2.99°	34°51'03.73"N	127°36'46.77"E
YSU VOR/DME		34°50'34.3"N	127°37'08.7"E
SOONA	BRG 166.34°/13.00 NM YSU	34°38'27.5"N	127°42'56.0"E



**INSTRUMENT  
APPROACH  
CHART - ICAO**

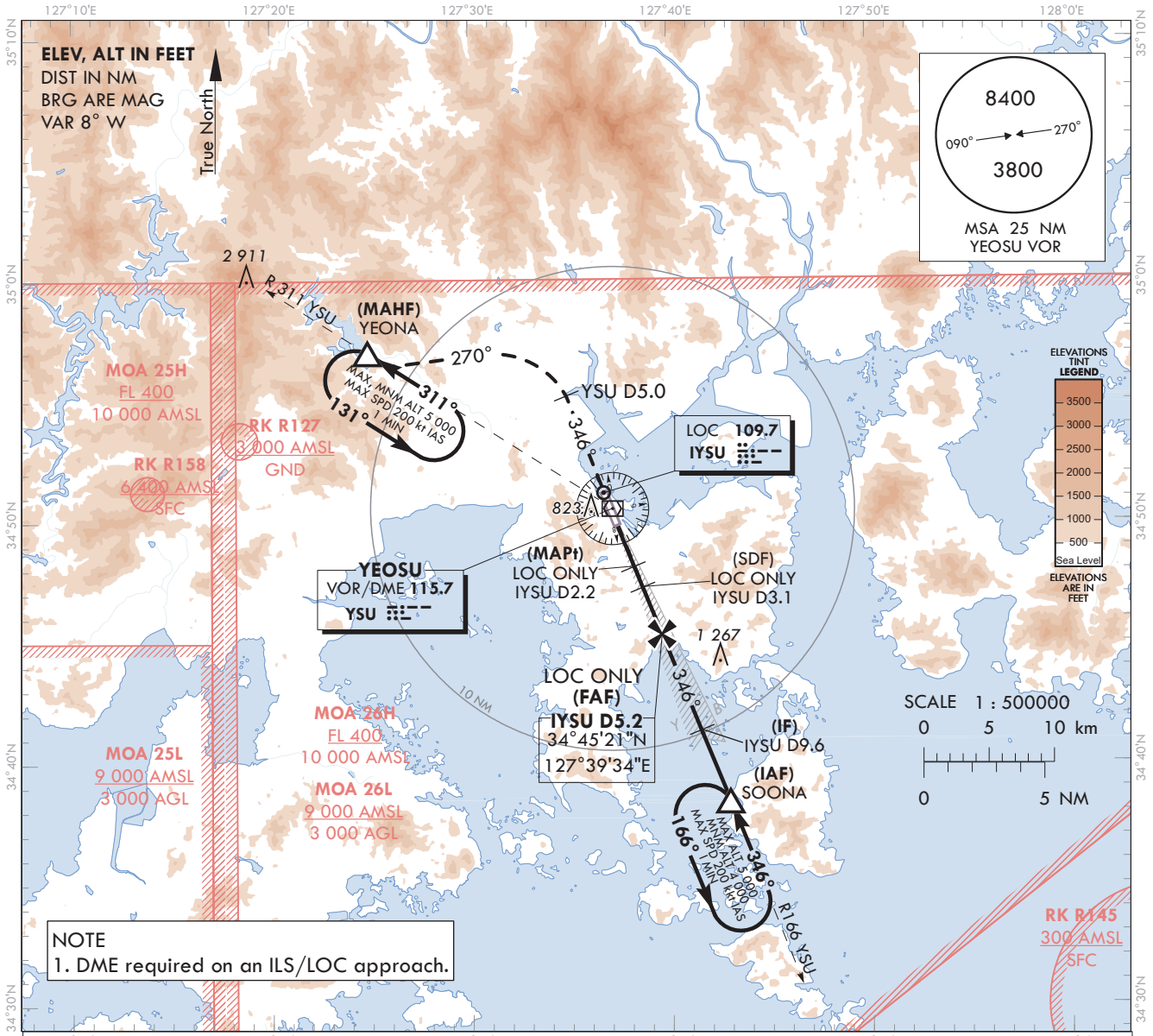
**AERODROME ELEV 53 ft**  
HEIGHTS RELATED TO  
THR RWY 35 - ELEV 31 ft

SACHEON APP	135.4
YEOSU TWR	122.5
	240.9

**YEOSU/Yeosu (RKJY)**

**ILS Y or LOC Y RWY 35**

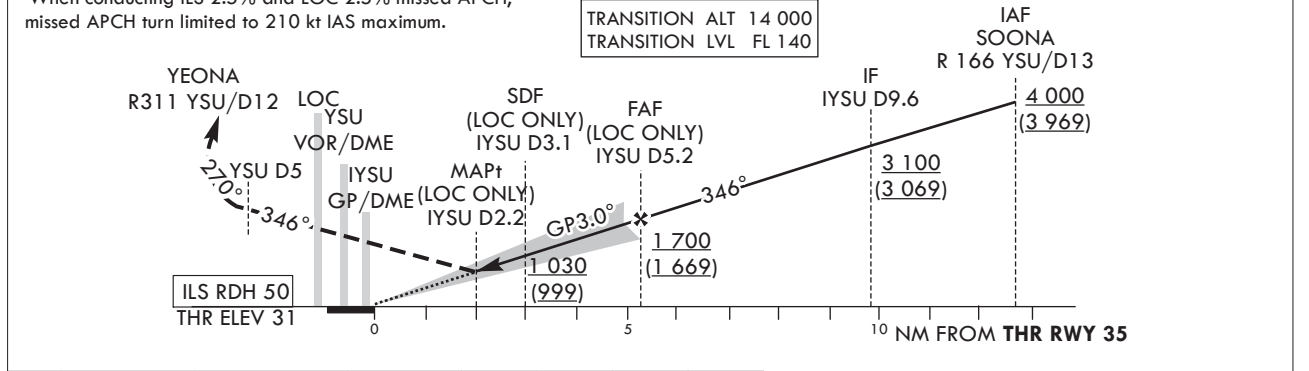
Note : Approach Under ICAO Flight Procedures.



**NOTE**  
1. DME required on an ILS/LOC approach.

RECOMMENDED PROFILE	DME IYSU	5	4	3	2.5	<b>MISSED APPROACH</b> Climb straight ahead to YSU 5 DME, Then turn LEFT HDG 270° to intercept and Climb on R 311 YSU to YEONA and Hold at 5 000 ft
Final Approach Gradient 5.31%, 323 ft/NM	ALT(HGT)	1 646 (1 615)	1 323 (1 292)	1 001 (970)	850 (819)	

\* When conducting ILS 2.5% and LOC 2.5% missed APCH, missed APCH turn limited to 210 kt IAS maximum.



CATEGORY	DA(DH)/MDA(MDH)	A				Rate of descent				
		B	C	D						
STA	CAT-1 (CG 2.5%)	FULL	465	1 900 m	Knots	60	90	120	150	180
		ALS INOP	(434)	2 300 m		V/V fpm	318	478	637	796
	CAT-1 (CG 5.0%)	FULL	234	RVR 750 m, VIS 800 m	* Timing Not authorized for defining MAPt. * Circling Not authorized.					
		ALS INOP	(203)	1 200 m						
LOC (CG 2.5%)	FULL	850	3 400 m							
	ALS INOP	(819)	3 800 m							

Chage : Improved clarity such as terrain.

YEOSU/Yeosu(RKJY)  
ILS Y or LOC Y RWY 35

AERONAUTICAL DATA TABULATION

ILS Y / LOC Y Approach to RWY 35 from SOONA		
Fix/point		Coordinates
SOONA(IAF)	R 166 YSU /13.00 NM YSU	34°38'27.5"N 127°42'56.0"E
D9.6 IYSU(IF)	BRG 345.94°/9.60 NM IYSU	34°41'14.7"N 127°41'34.5"E
D5.2 IYSU(FAF LOC ONLY)	BRG 345.94°/5.17 NM IYSU	34°45'21.2"N 127°39'34.2"E
D3.1 IYSU(SDF LOC ONLY)	BRG 345.94°/3.10 NM IYSU	34°47'16.1"N 127°38'38.1"E
D2.2 IYSU(MAPt LOC ONLY)	BRG 345.94°/2.20 NM IYSU	34°48'06.4"N 127°38'13.5"E
THR RWY 35	Final approach descent angle 3.04° (LOC ONLY)	34°50'00.53"N 127°37'17.70"E
IYSU DME		34°50'10.5"N 127°37'18.1"E
YSU VOR/DME		34°50'34.3"N 127°37'08.7"E
IYSU LOC		34°51'13.0"N 127°36'42.2"E
D5.0 YSU	BRG 345.94°/5.00 NM YSU	34°55'10.9"N 127°34'45.7"E
YEONA	R 311 YSU /12.00 NM YSU	34°57'03.8"N 127°24'52.1"E

**INSTRUMENT  
APPROACH  
CHART - ICAO**

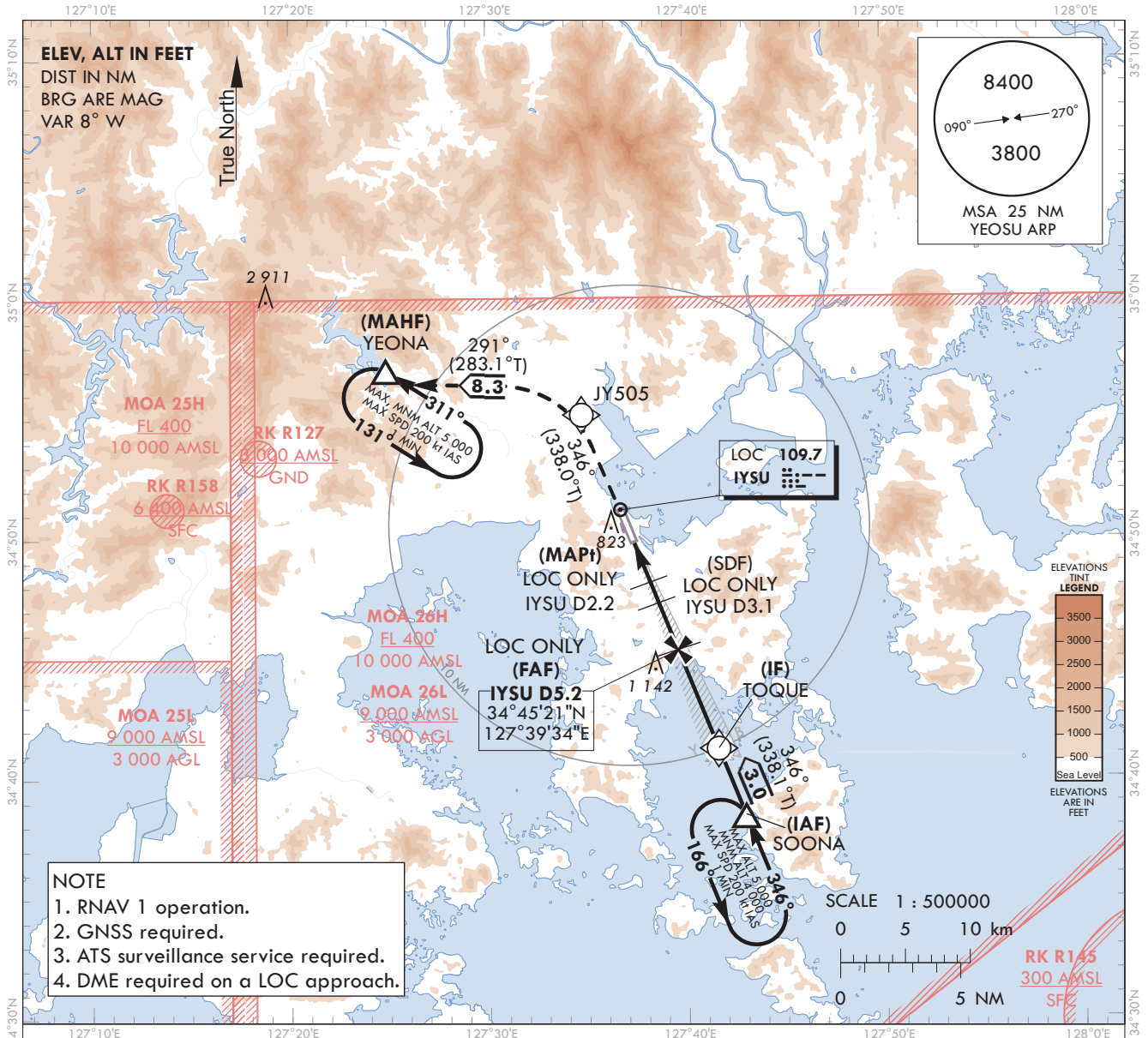
**AERODROME ELEV 53 ft**  
HEIGHTS RELATED TO  
THR RWY 35 - ELEV 31 ft

SACHEON APP	135.4
YEOSU TWR	122.5
	240.9

**YEOSU/Yeosu (RKJY)**

**ILS Z or LOC Z RWY 35**

Note : Approach Under ICAO Flight Procedures.



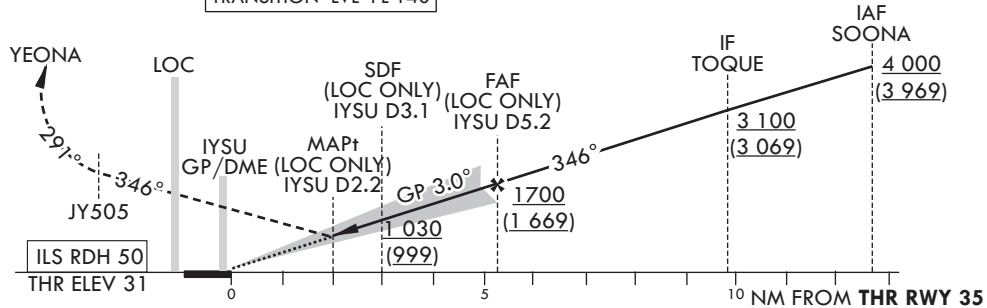
- NOTE**
1. RNAV 1 operation.
  2. GNSS required.
  3. ATS surveillance service required.
  4. DME required on a LOC approach.

RECOMMENDED PROFILE	DME IYSU	5	4	3	2.5
Final Approach Gradient 5.31%, 323 ft/NM	ALT(HGT)	1 646 (1 615)	1 323 (1 292)	1 001 (970)	850 (819)

**MISSED APPROACH**

Climb at 5 000 ft on track of 346° to JY505, LEFT turn on track of 291° to YEONA, Hold as published.

TRANSITION ALT 14 000  
TRANSITION LVL FL 140



CATEGORY	DA(DH)/MDA(MDH)	A	B	C	D	Knots							
						60	90	120	150	180			
STA	CAT-1 (CG 2.5%)	FULL	465 (434)	1 900 m			Rate of descent	V/V fpm	318	478	637	796	955
		ALS INOP	2 300 m										
	CAT-1 (CG 5.0%)	FULL	234 (203)	RVR 750 m, VIS 800 m									
		ALS INOP	1 200 m										
LOC (CG 2.5%)	FULL	850	3 400 m			*Timing Not authorized for defining MAPt. *Circling Not authorized.							
	ALS INOP	(819)	3 800 m										

Change : Improved clarity such as terrain.

YEOSU/Yeosu(RKJY)  
ILS Z or LOC Z RWY 35

AERONAUTICAL DATA TABULATION

ILS Z / LOC Z Approach to RWY 35 from SOONA			
Fix/point		Coordinates	
SOONA(IAF)		34°38'27.5"N	127°42'56.0"E
TOQUE(IF)		34°41'14.7"N	127°41'34.5"E
D5.2 IYSU(FAF LOC ONLY)	BRG 345.94°/5.17 NM IYSU	34°45'21.2"N	127°39'34.2"E
D3.1 IYSU(SDF LOC ONLY)	BRG 345.94°/3.10 NM IYSU	34°47'16.1"N	127°38'38.1"E
D2.2 IYSU(MAPt LOC ONLY)	BRG 345.94°/2.20 NM IYSU	34°48'06.4"N	127°38'13.5"E
THR RWY 35	Final approach descent angle 3.04° (LOC ONLY)	34°50'00.53"N	127°37'17.70"E
IYSU DME		34°50'10.5"N	127°37'18.1"E
IYSU LOC		34°51'13.0"N	127°36'42.2"E
JY505		34°55'10.9"N	127°34'45.7"E
YEONA		34°57'03.8"N	127°24'52.1"E

**INSTRUMENT  
APPROACH  
CHART - ICAO**

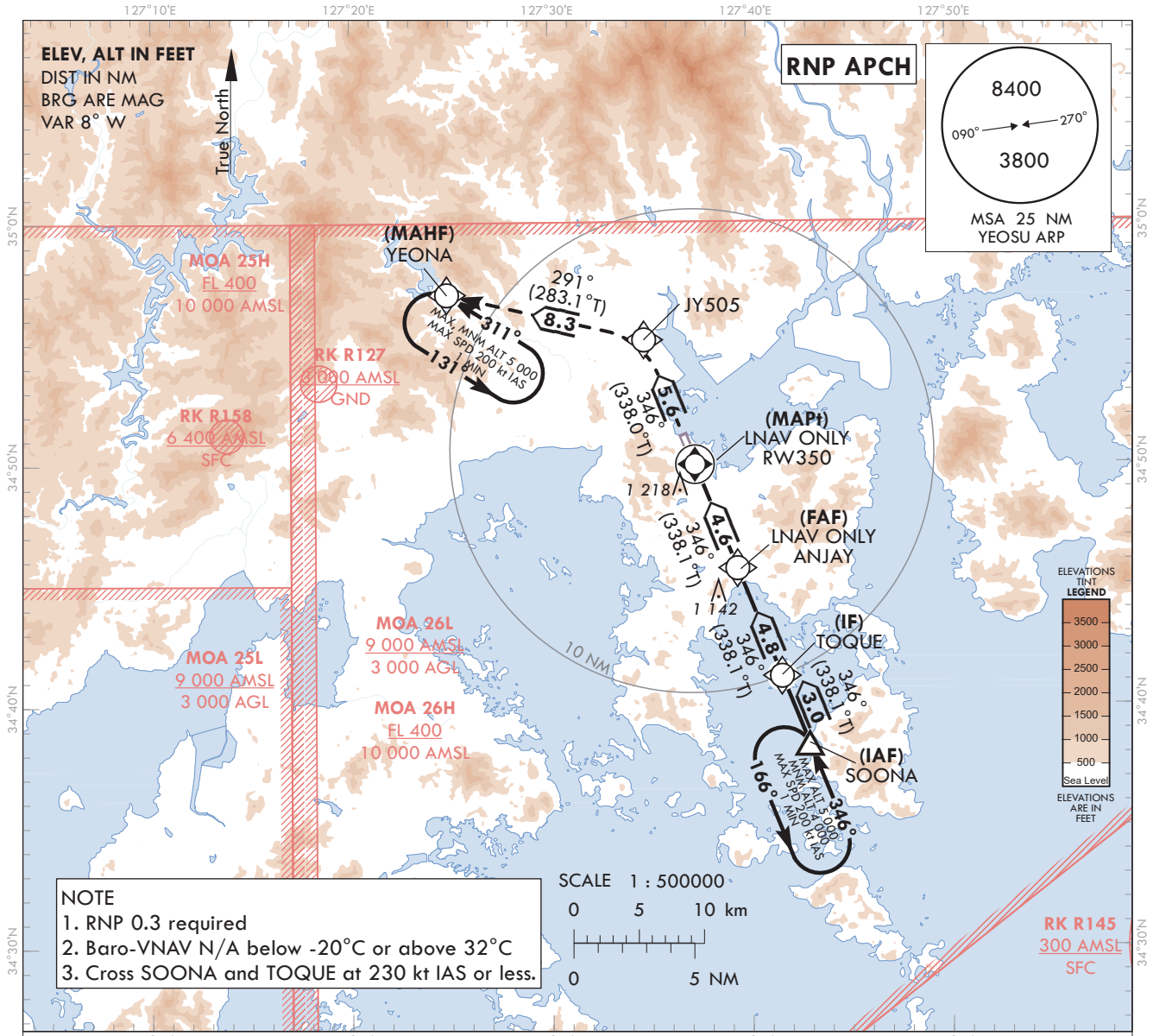
**AERODROME ELEV 53 ft**  
HEIGHTS RELATED TO  
THR RWY 35 - ELEV 31 ft

SACHEON	APP	135.4
YEOSU	TWR	122.5
		240.9

**YEOSU/Yeosu (RKJY)**

**RNP RWY 35**

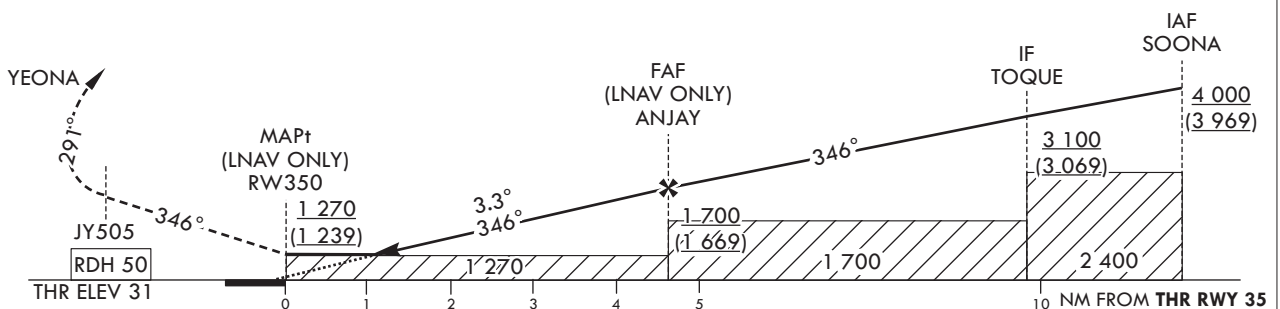
Note : Approach under ICAO Flight Procedures.



**MISSED APPROACH**

Climb to 5 000 ft on track of 346° to JY505, LEFT turn on track of 291° to YEONA.  
Hold as published.

TRANSITION ALT 14 000  
TRANSITION LVL FL 140



CATEGORY		MDA(H)/DA(H)	A	B	C	D	Knots						
STA	LNAV/VNAV	FULL	1 070	4 400 m			Rate of descent	V/V fpm	350	525	700	875	1 050
		ALS INOP	(1 039)	4 900 m									
	LNAV	FULL	1 270	5 000 m			*Timing Not authorized for defining MAPt. *Circling Not authorized.						
		ALS INOP	(1 239)	5 000 m									

Change : Improved clarity such as terrain.

AERONAUTICAL DATA TABULATION

Instrument Approach Procedure Coding Tables

RNP RWY 35

Serial Number	Path Descriptor	Waypoint Identifier	Fly-over	Course/Track °M(°T)	Distance (NM)	Turn direction	Altitude (ft)	Speed (kt)	Coordinates	VPA/RDH	Navigation specification	Remarks
001	IF	SOONA	-	-	-	-	+4 000	-230	34°38'27.5"N 127°42'56.0"E	-	RNP APCH	IAF
002	TF	TOQUE	-	346(338.1)	3.0	-	+3 100	-230	34°41'14.7"N 127°41'34.5"E	-	RNP APCH	IF
003	TF	ANJAY	-	346(338.1)	4.8	-	+1 700	-	34°45'42.7"N 127°39'23.7"E	-	RNP APCH	FAF
004	TF	RW350	Y	346(338.1)	4.6	-	+1 270	-	34°50'00.53"N 127°37'17.70"E	-3.30/50	RNP APCH	MAPt
005	TF	JY505	-	346(338.0)	5.6	-	-	-	34°55'10.9"N 127°34'45.7"E	-	RNP APCH	-
006	TF	YEONA	Y	291(283.1)	8.3	-	-	-	34°57'03.8"N 127°24'52.1"E	-	RNP APCH	-
007	HM	YEONA	Y	311(302.6)	-	L	@5 000	-200	34°57'03.8"N 127°24'52.1"E	-	RNP APCH	1 MIN (Outbound timing)

HOLDING PROCEDURE

Holding Identification	Path Descriptor	Waypoint Identifier	Fly-over	Course/Track °M(°T)	Time (min)	Turn direction	Altitude (ft)	Speed (kt)	Coordinates	VPA/RDH	Navigation specification	Remarks
RNP RWY 35	HM	SOONA	Y	346(338.5)	1	L	-5 000 +4 000	-200	34°38'27.5"N 127°42'56.0"E	-	RNAV 1	-

**INSTRUMENT  
APPROACH  
CHART - ICAO**

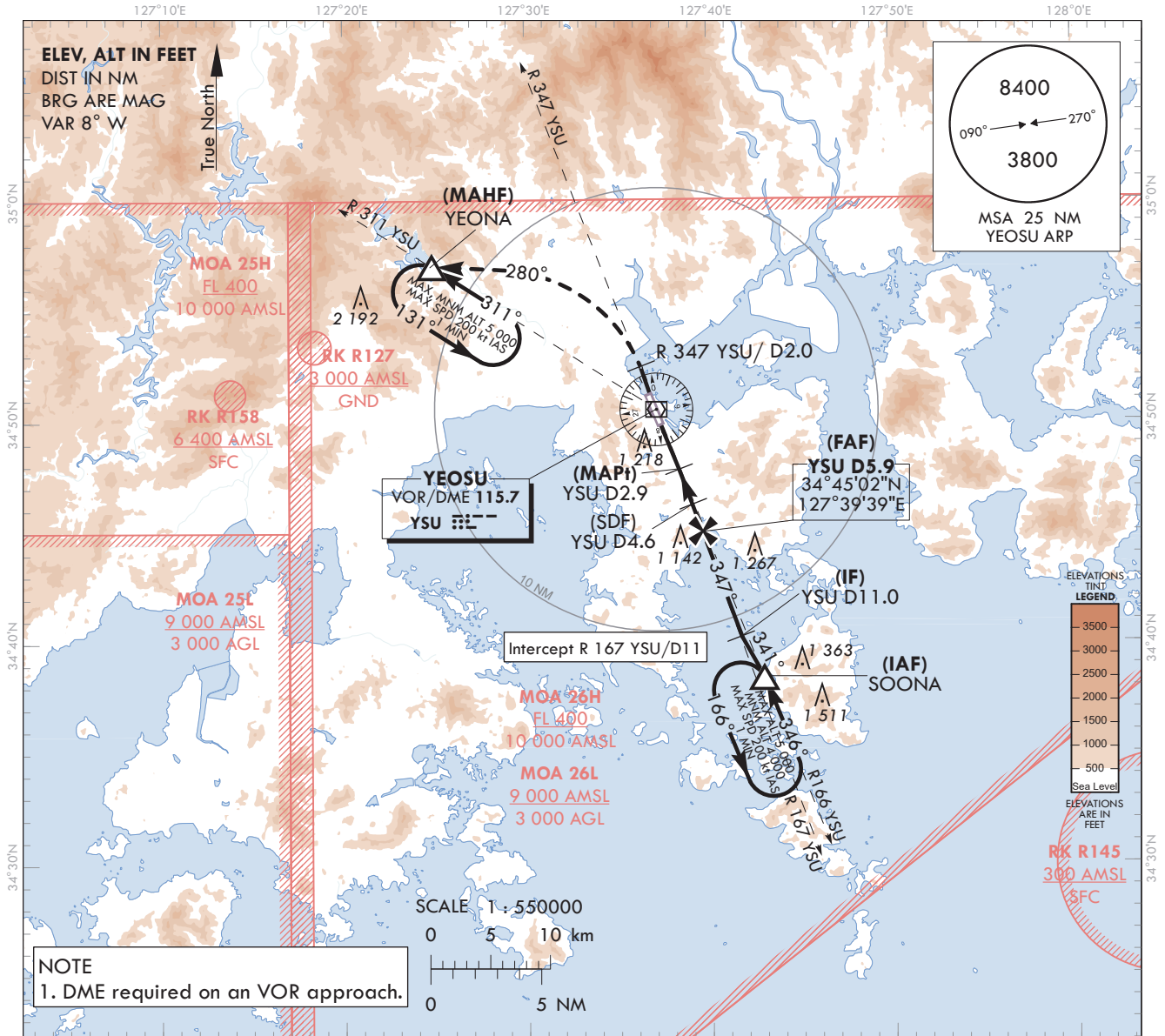
**AERODROME ELEV 53 ft**  
HEIGHTS RELATED TO  
THR RWY 35 - ELEV 31 ft

SACHEON APP	135.4
YEOSU TWR	122.5
	240.9

**YEOSU/Yeosu (RKJY)**

**VOR RWY 35**

Note : Approach under ICAO Flight Procedures.



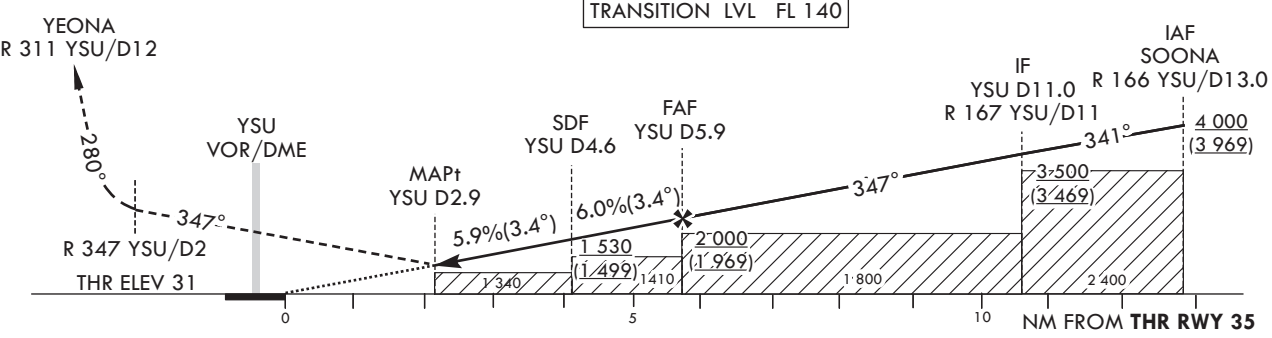
**NOTE**  
1. DME required on an VOR approach.

**MISSED APPROACH**

Climb straight ahead to R 347 YSU/D2.  
Then turn LEFT HDG 280° to intercept and  
Climb on R 311 YSU to YEONA. Hold at 5 000 ft.

RECOMMENDED PROFILE(LOC ONLY)	DME IYSU	5	4.1
Final Approach Gradient 5.93%, 360 ft/NM	ALT(HGT)	1 676	1 340
		(1 645)	(1 309)

TRANSITION ALT 14 000  
TRANSITION LVL FL 140



CATEGORY	MDA(MDH)	A	B	C	D	Knots						
						60	90	120	150	180		
STA	FULL	1 340 (1 309)	5 000 m			Rate of descent	V/V fpm	360	540	720	900	1 080
	ALS INOP		5 000 m				* Timing Not authorized for defining MAPt. * Circling Not authorized.					

Change : Improved clarity such as terrain.

YEOSU/Yeosu(RKJY)  
VOR RWY 35

AERONAUTICAL DATA TABULATION

VOR Approach to RWY 35 from SOONA		
	Fix/point	Coordinates
SOONA(IAF)	R 166 YSU /13.00 NM YSU	34°38'27.5"N 127°42'56.0"E
D11.0 YSU(IF)	BRG 347.41°/11.00 NM YSU	34°40'15.2"N 127°41'48.9"E
D5.9 YSU(FAF)	BRG 347.41°/5.90 NM YSU	34°45'02.3"N 127°39'38.9"E
D4.6 YSU(SDF)	BRG 347.41°/4.60 NM YSU	34°46'15.4"N 127°39'05.8"E
D2.9 YSU(MAPt)	BRG 347.41°/2.90 NM YSU	34°47'51.1"N 127°38'22.3"E
THR RWY 35	Final approach descent angle 3.41°(FAF-SDF) / 3.38°(SDF-THR)	34°50'00.53"N 127°37'17.70"E
YSU VOR/DME		34°50'34.3"N 127°37'08.7"E
D2.0 YSU	BRG 347.15°/2.00 NM YSU	34°52'26.9"N 127°36'17.0"E
YEONA	BRG 310.64°/12.00 NM YSU	34°57'03.8"N 127°24'52.1"E